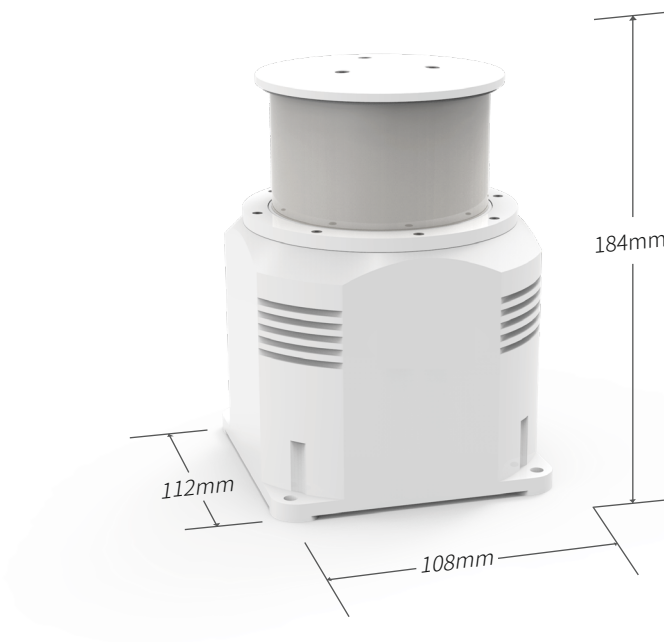







360° Infrared Panoramic E.O.S

Mini 640×512



PRODUCT HIGHLIGHTS

 AI	 Visualized panorama	 Wide-area scene	 Real-time search	 Multi-target trajectory	 Virtual electronic fence
 Intelligent PTZ camera linkage	 All time	 Adaptability to harsh environments	 Low power consumption	 Lightweight and easy to deploy	 HD picture quality

APPLICATION SCENARIOS



Coastal and maritime surveillance



Border security surveillance



Oil and gas pipeline surveillance



Perimeter surveillance



Critical infrastructure protection

TECHNICAL DATE

Product type	RP-SilentW-UM613	RP-SilentW-UM619	RP-SilentW-UM625	
Detector type	Uncooled			
Detector resolution	640×512			
Focal length	13mm	19mm	25mm	
Panoramic image resolution	6800×512	9900×512	13000×512	
360 Degree scanning speed	0.74Hz	0.555Hz	0.444Hz	
180 Degree scanning speed	1.48Hz	1.11Hz	0.854Hz	
Horizontal FOV	360°			
Vertical FOV	26.6°	18.4°	14°	
Vertical adjustment range	±5°			
Ingress protection	IP66			
Dimension (L×W×H)	108×112x175mm			
Weight	2.1kg			
Max. Operating temperature range	- 40°C~+60°C			
Data interface	DC24V			
Avg. Power consumption	15w			
Communication Interface	Ethernet port			
Detecting distance	People (1.7m)	400m	600m	750m
	Vehicle (4m)	800m	1200m	1500m

