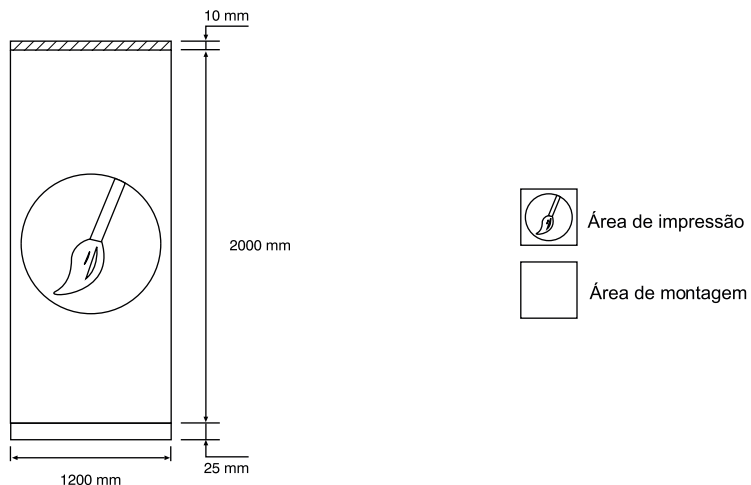
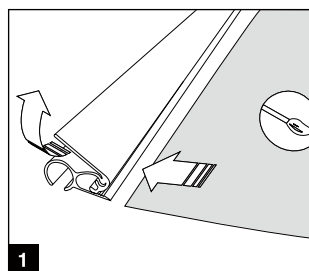


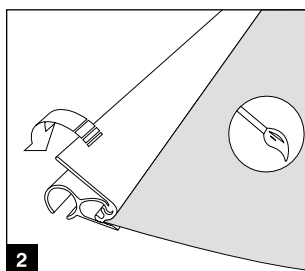
● Medidas do poster



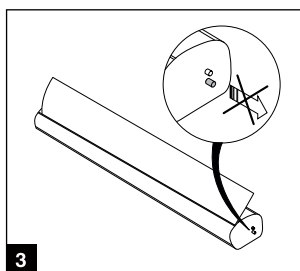
● Montagem do expositor



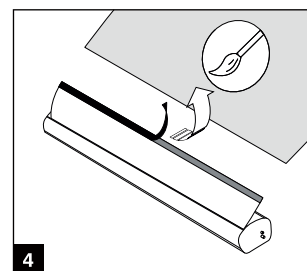
1 Inserir poster no perfil superior.



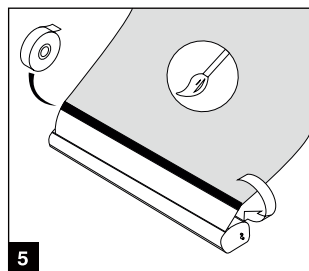
2 Pressionar/fechar perfil superior.



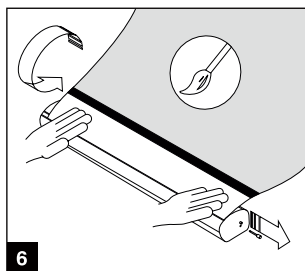
3 Atenção, não remover a cavilha!



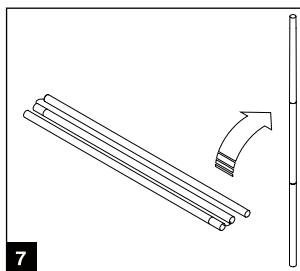
4 Remover a fita protectora do adesivo da película da base.



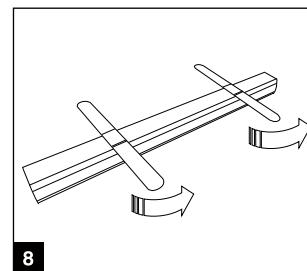
5 Colar o grafismo e reforçar com fita cola em volta, formando uma cinta.



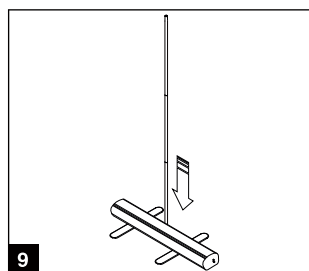
6 Remover a cavilha de travamento do enrolador e enrolar o grafismo.



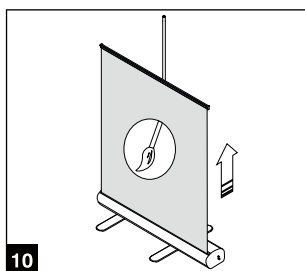
7 Unir as peças dos mastros.



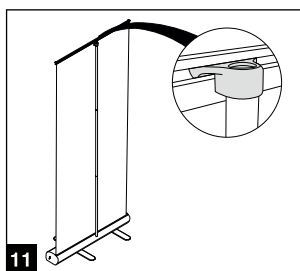
8 Abrir os pés estabilizadores.



9 Colocar o mastro na base.



10 Puxar grafismo até ao topo do mastro.



11 Fixar a barra superior nos mastros.

